



JOTAGAS

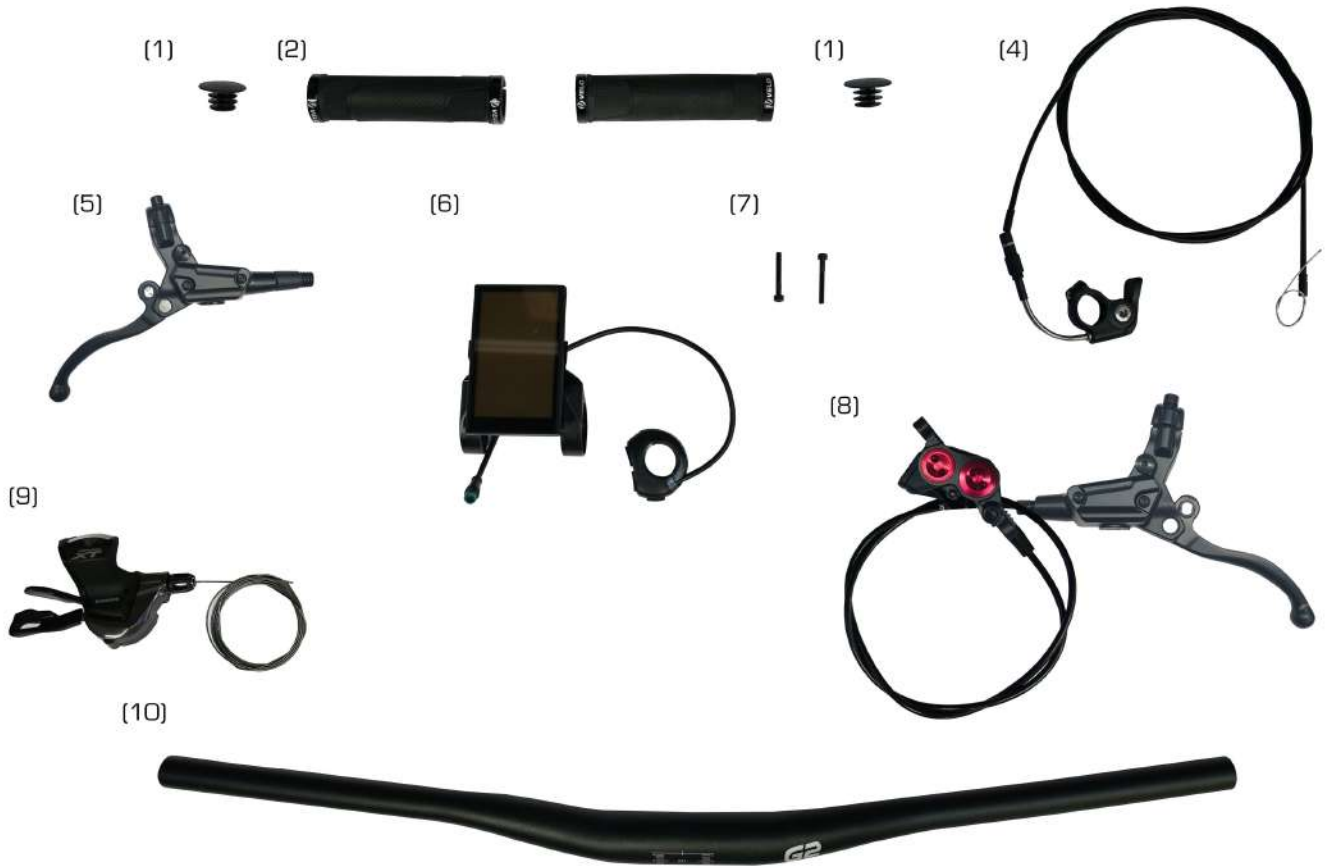
MOTORCYCLES & E-BIKES

SPARE PARTS LIST
E-BIKE 2020



| Description | page |
|-------------------------------|---------|
| Sheet 1: Handlebar set | 3 - 4 |
| Sheet 2: Steering set | 5 - 6 |
| Sheet 3: Rear wheel set | 7 - 8 |
| Sheet 4: Front wheel set | 9 - 10 |
| Sheet 5: Swingarm set | 11 - 12 |
| Sheet 6: Chassis set | 13 - 14 |
| Sheet 7: Pedalier motor set | 15 - 16 |
| Sheet 8: Front suspension set | 17 - 18 |
| Sheet 9: Front break set | 19 - 20 |
| Sheet 10: Rear break set | 21 - 22 |

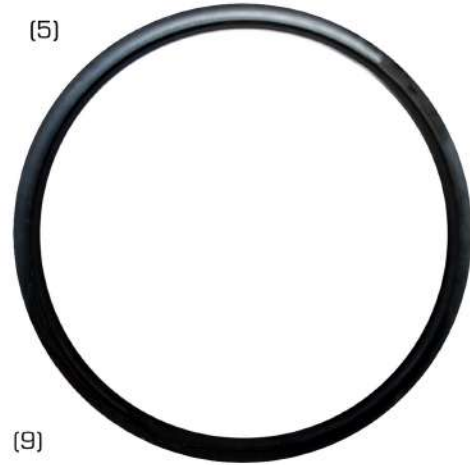
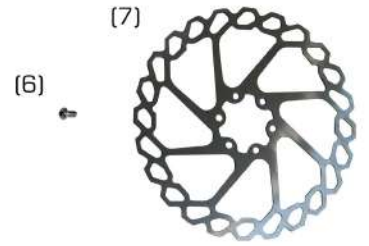
(iva no incluido)



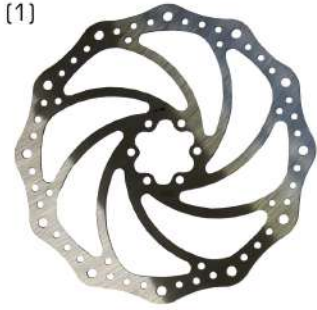
| Nº | Reference | Description | Quantity |
|----|------------|-----------------------------|----------|
| 1 | B25C000101 | HANDLEBAR PROTECTION PLUG | 2 |
| 2 | B25C000102 | HANDLE SET | 1 |
| 4 | B25C000104 | TRIGGER TELESCOPIC SEATPOST | 1 |
| 6 | B25C000106 | DISPLAY | 1 |
| 7 | B25C000107 | SCREW 4x30 ALLEN | 2 |
| 9 | B25C000109 | SHIFTER | 1 |
| 10 | B25C000110 | HANDLEBAR | 1 |



| Nº | Reference | Description | Quantity |
|----|------------|--------------------------------------|----------|
| 1 | B25C000201 | STEERING AXLE SCREW PROTECTION PLUG | 1 |
| 2 | B25C000202 | SCREW 6x30 ALLEN | 1 |
| 3 | B25C000203 | SUPERIOR STEERING PLUG | 1 |
| 4 | B25C000204 | STEERING SEPARATOR 5 MM | 1 |
| 5 | B25C000205 | STEERING SEPARATOR 10 MM | 1 |
| 6 | B25C000206 | STEM | 1 |
| 7 | B25C000207 | STEERING SEPARATOR 15 MM | 1 |
| 8 | B25C000208 | TOP BRACE STEERING | 1 |
| 9 | B25C000209 | STEERING RETAINER COVER | 1 |
| 10 | B25C000210 | SEPARATOR WASHER 0.3x33x29 | 1 |
| 11 | B25C000211 | STEERING CENTER WASHER 30x29x5 | 1 |
| 12 | B25C000212 | TOP STEERING BEARING 41x30x7 | 1 |
| 13 | B25C000213 | OCTOPUS | 1 |
| 14 | B25C000214 | SCREW 6x16 ALLEN | 7 |
| 15 | B25C000215 | LOWER STEERING BEARING 46x33x7 | 1 |
| 16 | B25C000216 | STEERING CENTRAL LOWER COVER 46x30x6 | 1 |
| 17 | B25C000217 | STEERING TUBE | 1 |
| 18 | B25C000218 | BOTTOM BRACE STEERING | 1 |



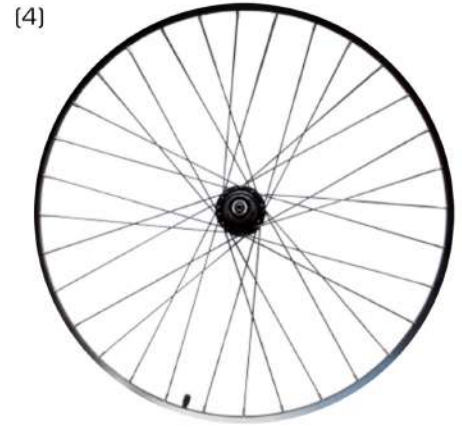
| Nº | Reference | Description | Quantity |
|----|--------------|------------------------------------|----------|
| 1 | B25C000301 | CASSETTE | 1 |
| 2 | B25C000302 | CASSETTE SEPARATION WASHER 41x35x1 | 1 |
| 3 | B25C000303 | TYRE 27,5" | 1 |
| 3 | B25C000303B | TYRE 29" | 1 |
| 4 | B25C000304 | REAR WHEEL 27,5" | 1 |
| 4 | B25C000304B | REAR WHEEL 29" | 1 |
| 5 | B25C000305 | INNER TUBE 27,5" | 1 |
| 5 | B25C000305B | INNER TUBE 29" | 1 |
| 6 | B25C000306 | SCREW 5x10 TORCH | 6 |
| 7 | B25C000307 | REAR BRAKE DISC 180 Ø | 1 |
| 8 | B25C00030820 | REAR WHEEL AXLE | 1 |
| 9 | B25C000309 | REAR WHEEL SENSOR MAGNET | 1 |



[1]



[3]



[4]

[2]



[7]



[6]



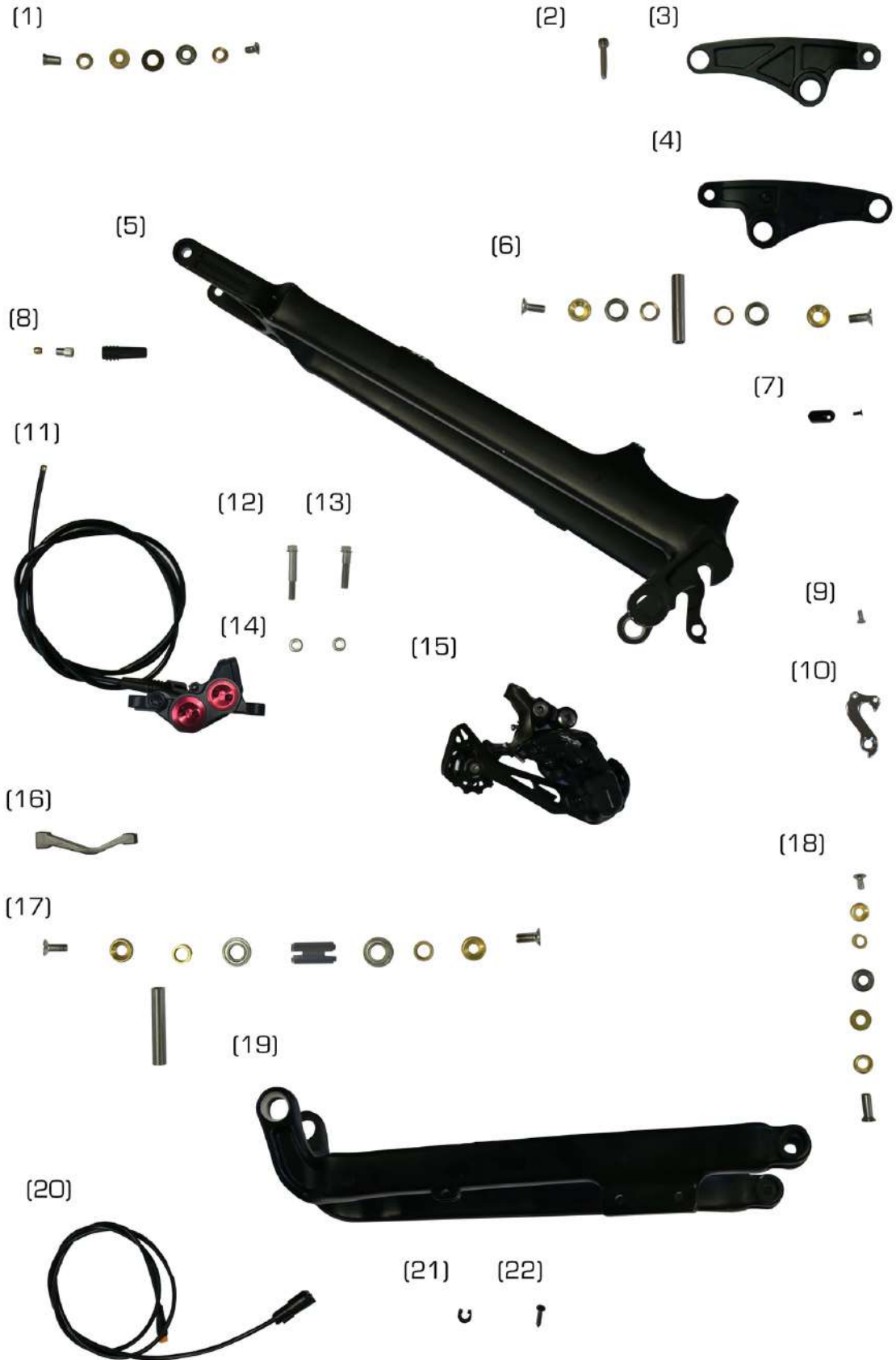
[6]



[5]



| Nº | Reference | Description | Quantity |
|----|-------------|-----------------------------|----------|
| 1 | B25C000401 | FRONT BRAKE DISC 203 Ø | 1 |
| 2 | B25C000306 | SCREW 5x10 TORCH | 6 |
| 3 | B25C000303 | TYRE 27,5" | 1 |
| 3 | B25C000303B | TYRE 29" | 1 |
| 4 | B25C000404 | FRONT WHEEL 27,5" | 1 |
| 4 | B25C000404B | FRONT WHEEL 29" | 1 |
| 5 | B25C000305 | INNER TUBE 27,5" | 1 |
| 5 | B25C000305B | INNER TUBE 29" | 1 |
| 6 | B25C000406 | STEERING AXLE CLOSURE SCREW | 2 |
| 7 | B25C000407 | STEERING FRONT AXLE | 1 |



| Nº | Reference | Description | Quantity |
|----|--------------|--|----------|
| 1 | B25C000501 | CAP KIT + SUSPENSION CRANKARM BEARING | 2 |
| 2 | B25C000202 | SCREW 6x30 ALLEN | 1 |
| 3 | B25C000503 | CRANKARM LEFT | 1 |
| 4 | B25C000504 | CRANKARM RIGHT | 1 |
| 5 | B25C000505 | TOP SWINGARM | 1 |
| 6 | B25C000506 | AXLE + KIT BEARING AND CRANKARM CAP | 1 |
| 7 | B25C000507 | SEALING COVER | 1 |
| 8 | B25C000508 | KIT LEVER AND CLAMP UNION ASSEMBLY | 1 |
| 9 | B25C000509 | SCREW 4x10 CONICAL ALLEN | 2 |
| 10 | B25C000510 | CHANGE PINS | 1 |
| 11 | B25C00051120 | CALIPER + REAR BREAK | 1 |
| 12 | B25C000512 | SCREW 6x40 HEXAGONAL | 1 |
| 13 | B25C000513 | SCREW 6x30 HEXAGONAL | 1 |
| 14 | B25C000514 | CONICAL WASHER CENTER BRAKE | 2 |
| 15 | B25C000515 | CHANGE DERAILLEURS | 1 |
| 16 | B25C000516 | BRAKE ADAPTER | 1 |
| 17 | B25C000517 | KIT CAP, BEARING, CENTER SWINGARM CH. | 1 |
| 18 | B25C000518 | KIT CAP + BEARING UNION SWINGARM TOP + LOWER | 2 |
| 19 | B25C000519 | LOWER SWINGARM | 1 |
| 20 | B25C000520 | SENSOR CABLE | 1 |
| 21 | B25C000521 | SENSOR CABLE CLIP | 1 |
| 22 | B25C000522 | SCREW THREAT SHEET 4 mm | 1 |
| 23 | B25C000523 | CAP KIT + BEARING CRANKARM COMPLETE SET | 1 |



| Nº | Reference | Description | Quantity |
|----|--------------|---|----------|
| 1 | B25C000507 | SEALING COVER | 4 |
| 2 | B25C00060220 | PLASTIC LOWER BATTERY SUPPORT | 1 |
| 3 | B25C000603 | SEAT | 1 |
| 4 | B25C000604 | CHASSIS 27,5 | 1 |
| 4 | B25C0006054B | CHASSIS 29 | 1 |
| 5 | B25M000605 | BATTERY | 1 |
| 6 | B25C00060620 | DROPPER SEATPOST | 1 |
| 7 | B25C00060720 | UPPER BATTERY PLASTIC SUPPORT WITH CLOSER | 1 |
| 8 | B25C000608 | REAR SHOCK | 1 |
| 9 | B25M000609 | CONTROLLER | 1 |
| 10 | B25C000610 | SHOCK SPECIAL SCREW | 2 |
| 11 | B25C000611 | SEATPOST CLAMP | 1 |
| 12 | B25C000612 | CONTROLLER TO DISPLAY EXTENSION | 1 |



| Nº | Reference | Description | Quantity |
|----|------------|-------------------------------------|----------|
| 1 | B25C000701 | CHAIN | 1 |
| 2 | B25C000702 | SETSCREW MOTOR | 2 |
| 3 | B25C000703 | ENGINE CAPTIVE NUT | 1 |
| 4 | B25C000704 | ENGINE CLOSURE COVER | 1 |
| 5 | B25C000705 | MOTOR CLOSURE COVER STAR SCREW 5x10 | 6 |
| 6 | B25C000706 | CHAINRINGS SET 36 TOOTH | 1 |
| 7 | B25C000707 | PEDAL SET | 1 |
| 8 | B25C000708 | CRANK SET | 1 |
| 9 | B25M000709 | MOTOR | 1 |
| 10 | B25C000710 | MOTOR PLASTIC PROTECTOR | 1 |
| 11 | B25C000711 | KIT NUT + O'RING + SEAL MOTOR | 1 |
| 15 | B25C000715 | CRANK SCREW | 2 |
| 16 | B25C000716 | CRANK SCREW COVER | 2 |
| 17 | B25C000717 | MOTOR AXLE | 1 |
| 18 | B25C000718 | CHARGER | 1 |

(1)



(2)



(3)



(6)



(7)



(5)



(5)



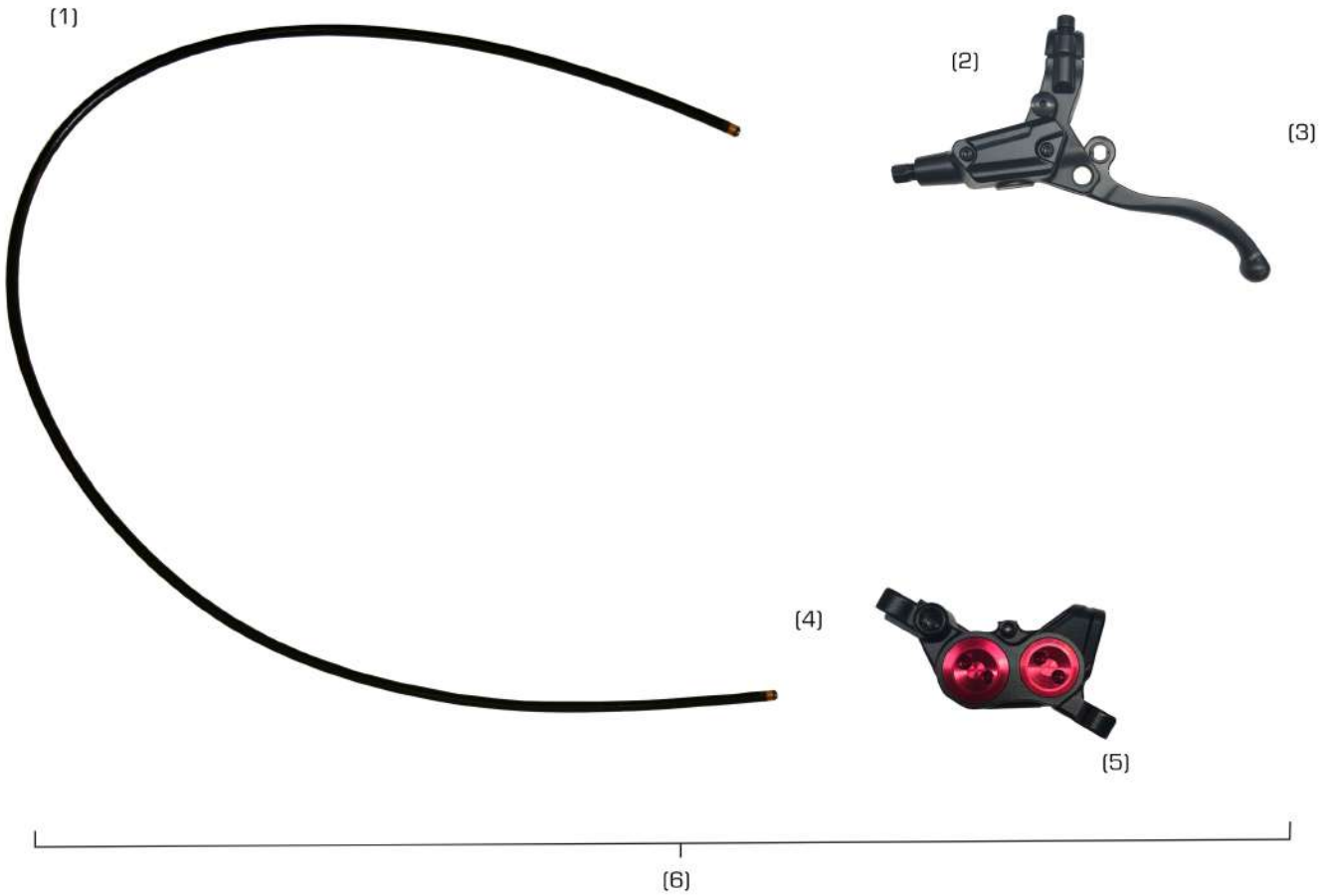
(8)



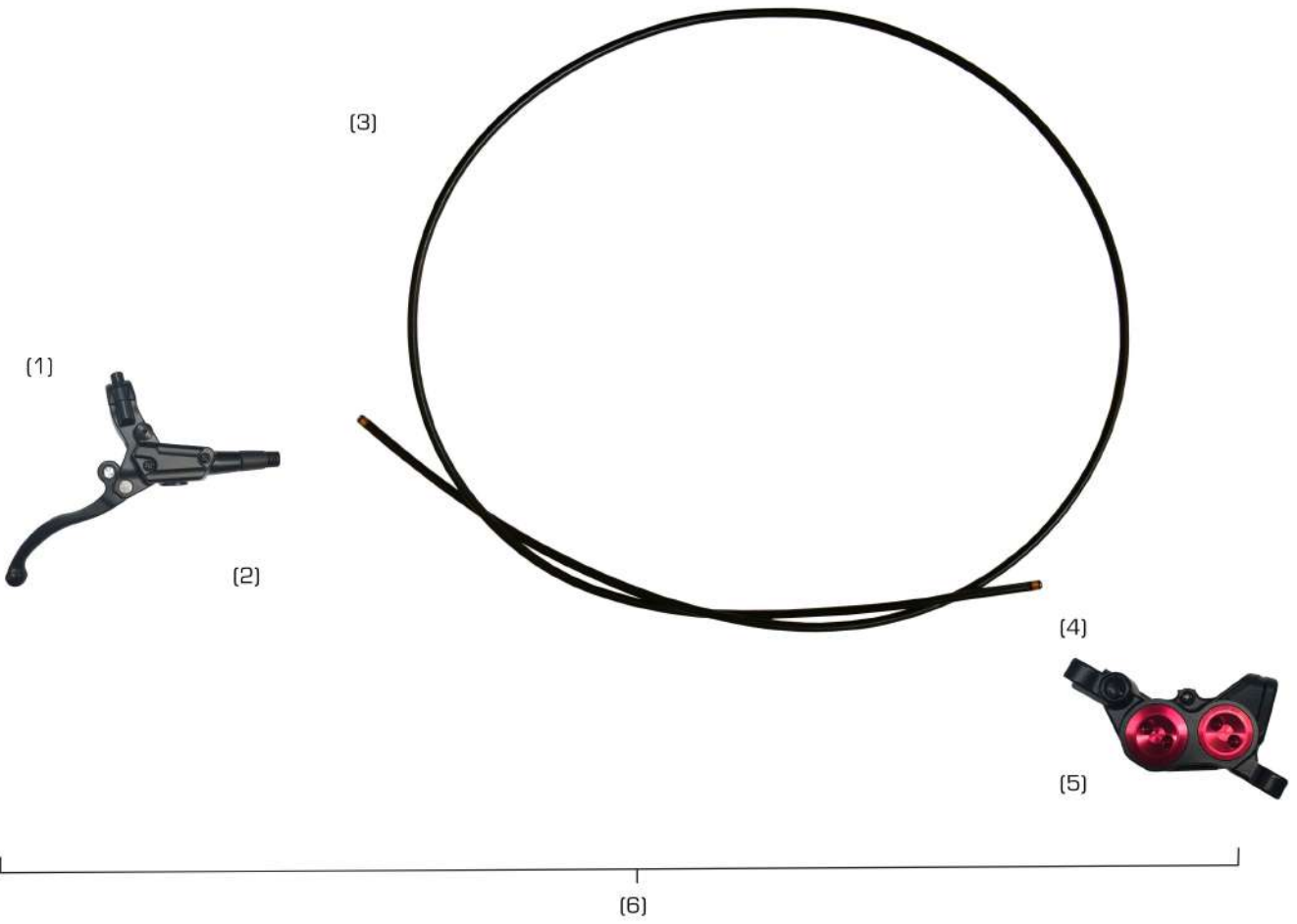
(9)



| Nº | Reference | Description | Quantity |
|-----|------------|------------------------------|----------|
| 1 | B25C000801 | SUSPENSION RIGHT | 1 |
| 2 | B25C000802 | SUSPENSION LEFT | 1 |
| 3 | B25C000803 | BREAK LINE GUIDE | 1 |
| 5 | B25C000805 | CARBON PROTECTOR SET | 1 |
| 6 | B25C000705 | STAR SCREW 5x10 | 4 |
| 7 | B25C000807 | FRONT BRAKE ADAPTER | 1 |
| 8 | B25C000808 | SCREW 6x20 WITH O’RING ALLEN | 4 |
| 9 | B25C000809 | CONICAL O’RING BREAK ADAPTER | 2 |
| 1-2 | B25C000810 | SUSPENSION BAR | 1 |
| 1 | B25C000811 | RIGHT SUSPENSION BOTTLE | 1 |
| 2 | B25C000812 | LEFT SUSPENSION BOTTLE | 1 |
| 1-2 | B25C000813 | SUSPENSION SET | 1 |



| Nº | Reference | Description | Quantity |
|----|--------------|---------------------|----------|
| 1 | B25C000901 | FRONT BREAK LINE | 1 |
| 2 | B25C00090220 | FRONT BRAKE PUMP | 1 |
| 3 | B25C00090320 | FRONT BRAKE HANDLE | 1 |
| 4 | B25C00090420 | FRONT BRAKE CALIPER | 1 |
| 5 | B25C000905 | FRONT BRAKE PADS | 2 |
| 6 | B25C00090620 | FRONT BREAK SET | 1 |



| Nº | Reference | Description | Quantity |
|----|--------------|--------------------|----------|
| 1 | B25C00100120 | REAR BREAK HANDLE | 1 |
| 2 | B25C00100220 | REAR BREAK PUMP | 1 |
| 3 | B25C001003 | REAR BREAK LINE | 1 |
| 4 | B25C00100420 | REAR BREAK CALIPER | 1 |
| 5 | B25C001005 | REAR BREAK PADS | 2 |
| 6 | B25C00100620 | REAR BREAK SET | 1 |